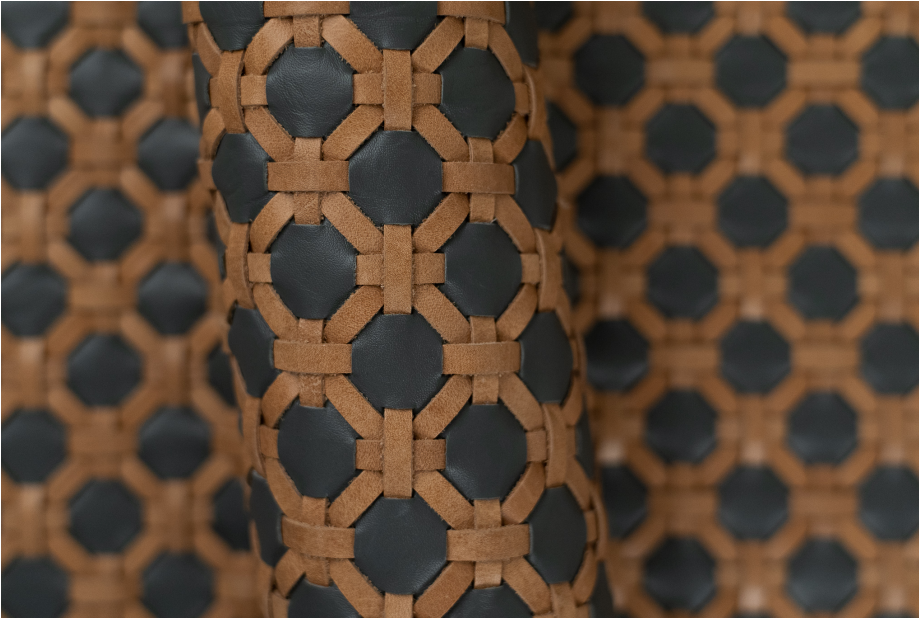


VIENNA LONDON AND NATURAL



TYPE OF LEATHER: Calfskin

TECHNIQUE: Aniline drum dyed and hand woven

DIRECTION: N/A

STRIP WIDTH: 5 mm

THICKNESS: 2.5 / 4.2 mm

REPEAT: 3 cm

SIZE: Panels are woven to required size, without width or height limitation.

IDEAL FOR: Upholstery and paneling

This is an inserted weave.
Exposure to sunlight may lead to fading.

For inquiries please email
lovecreating@lancewovens.com



www.lancewovenleather.com

Notes:

66 Fort Point Street Norwalk, CT 06855 (203) 852-6829