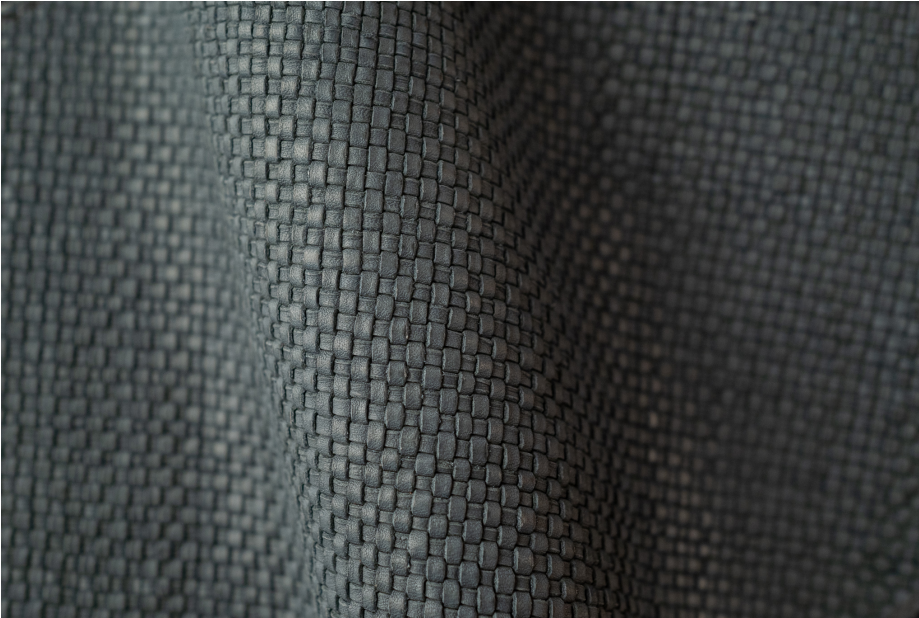


ROYAL BOHEMIAN DENIM



TYPE OF LEATHER: Calfskin

TECHNIQUE: Aniline drum dyed, hand woven and washed

DIRECTION: HV (Horizontal and Vertical) or Diagonal (Girato)

STRIP WIDTH: 3 mm

THICKNESS: 2.0 / 2.2 mm

SIZE: Panels are woven to required size, without width or height limitation.

CUSTOM COLOR: Available upon request

IDEAL FOR: Upholstery, pillows, paneling, handrails

This is a natural leather. It will develop a gentle patina over time.
Our washing creates subtle variation of color and texture.

Exposure to sunlight may lead to fading.

For inquiries please email
lovecreating@lancewovens.com



Notes: