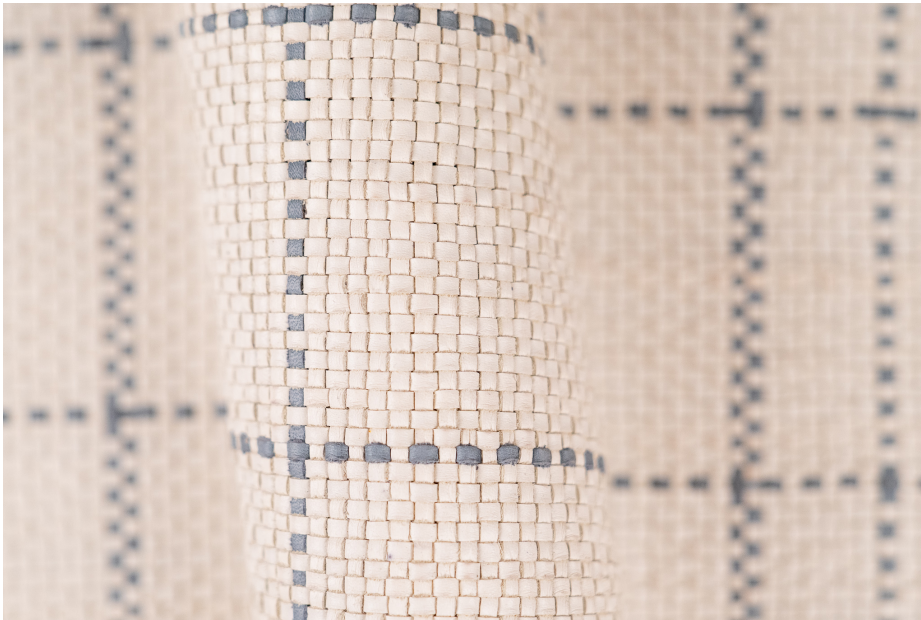


RIGA QUADRO IVORY AND AGRA BLUE



TYPE OF LEATHER: Veg tanned calfskin

TECHNIQUE: Aniline drum dyed, hand woven and washed

DIRECTION: Horizontal and Vertical (HV)

STRIP WIDTH: 3 mm

THICKNESS: 2 mm

REPEAT: 25 cm x 25 cm (9.5 in x 9.5 in)

SIZE: Panels are woven to required size, without width or height limitation.

IDEAL FOR: Upholstery, pillows, paneling, and handrails

This is a natural leather. It will develop a gentle patina, over time. Exposure to sunlight will move the color to a warmer hue. Washing creates a subtle variation of color and texture.

Also available with consistent matte finish.

For inquiries please email
lovecreating@lancewovens.com



Notes: