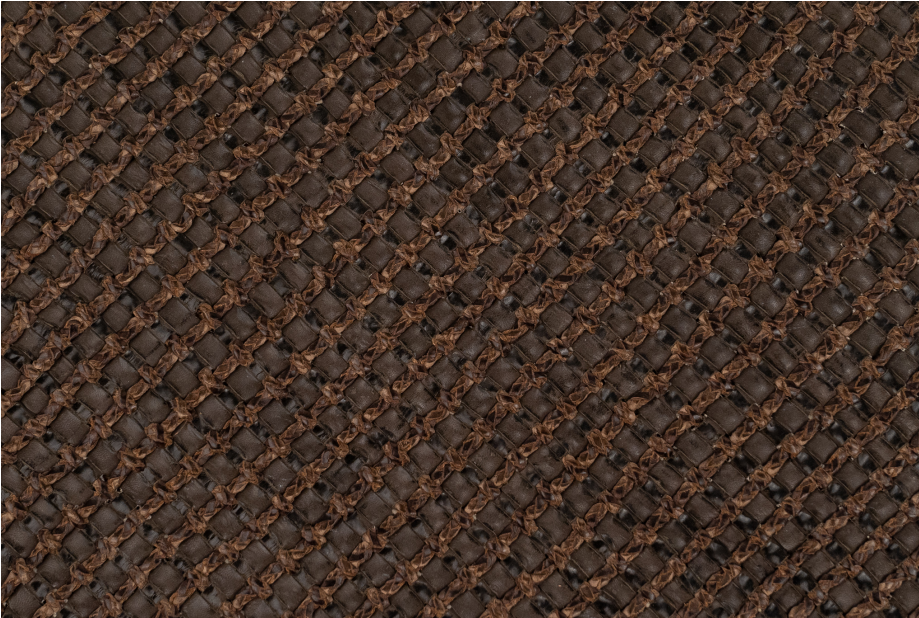


RETE STORM



This is a natural leather. It will develop a gentle patina, over time.
Available with matching leather border in choice of width and color from field.

For inquiries please email
lovecreating@lanceovens.com



www.lancewovenleather.com

TYPE OF LEATHER: Veg tanned calfskin

TECHNIQUE: Aniline drum dyed and hand woven

DIRECTION: Diagonal (Girato)

STRIP WIDTH: 7.5 mm + 4mm tubular braid

THICKNESS: 5 mm, before 1/3 in rug pad

REPEAT: 15 mm

SIZE: Panels are woven to required size, without width or height limitation.

IDEAL FOR: Rugs, walls, headboards, drawer fronts, and chunky floor pillows

Notes: