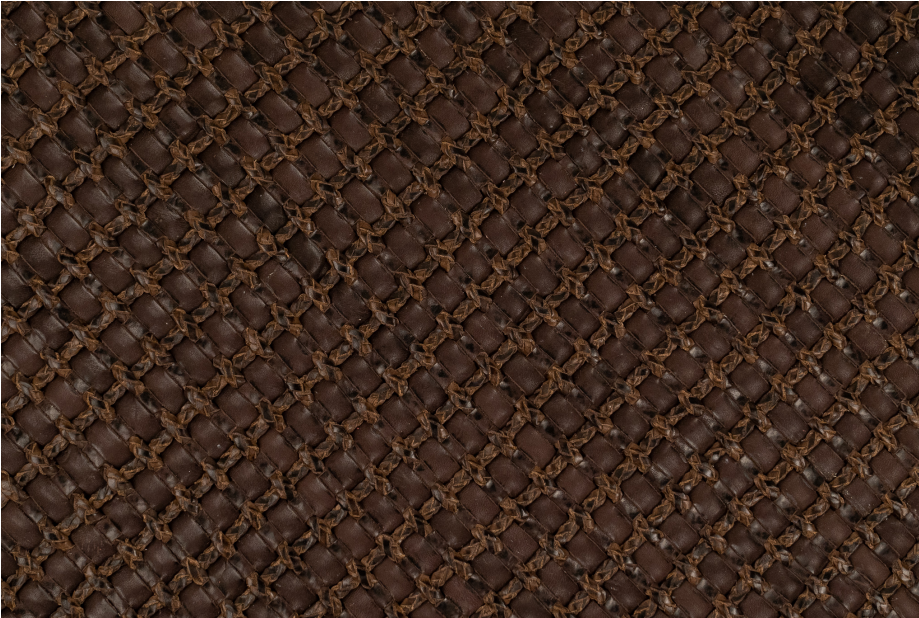


RETE ESPRESSO



This is a natural leather. It will develop a gentle patina, over time.
Available with matching leather border in choice of width and color from field.

For inquiries please email
lovecreating@lanceovens.com



www.lancewovenleather.com

TYPE OF LEATHER: Veg tanned calfskin
TECHNIQUE: Aniline drum dyed and hand woven
DIRECTION: Diagonal (Girato)
STRIP WIDTH: 7.5 mm + 4mm tubular braid
THICKNESS: 5 mm, before 1/3 in rug pad
REPEAT: 15 mm
SIZE: Panels are woven to required size, without width or height limitation.
IDEAL FOR: Rugs, walls, headboards, drawer fronts, and chunky floor pillows

Notes: