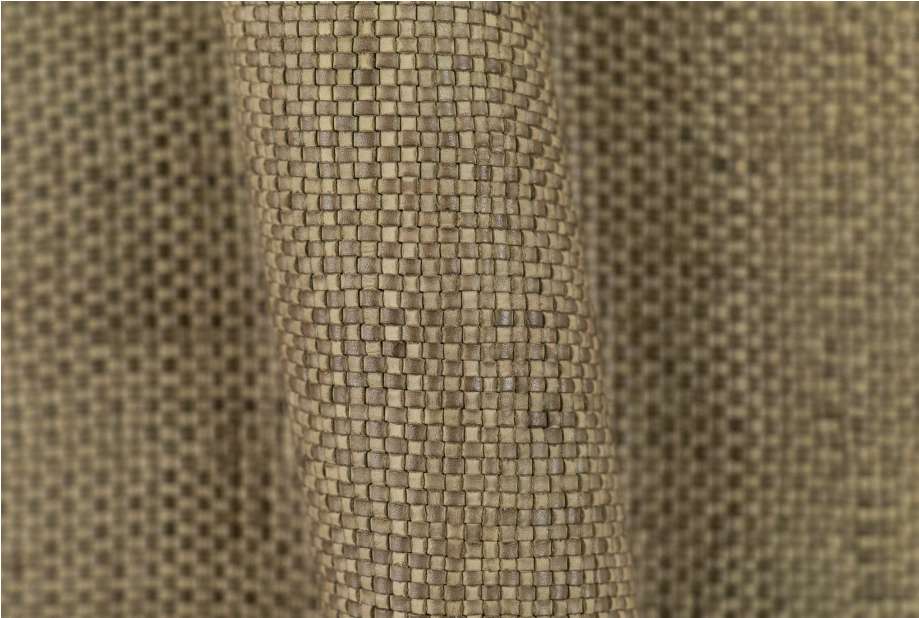


## BOHEMIAN CHARTREUSE



This is a natural leather, with subtle color variation.  
It will develop a gentle patina over time.  
Our washing creates subtle variation of color and texture.

Exposure to sunlight may lead to fading.

For inquiries please email  
[lovecreating@lancewovens.com](mailto:lovecreating@lancewovens.com)



TYPE OF LEATHER: Calfskin

TECHNIQUE: Aniline drum dyed, hand woven and washed. Top color is sponge applied randomly by hand.

DIRECTION: HV (Horizontal and Vertical) or Girato (Diagonal)

STRIP WIDTH: 3 mm

THICKNESS: 2 mm

SIZE: Panels are woven to required size, without width or height limitation.

CUSTOM COLOR: Available upon request

IDEAL FOR: Upholstery, pillows, paneling, handrails

Notes: