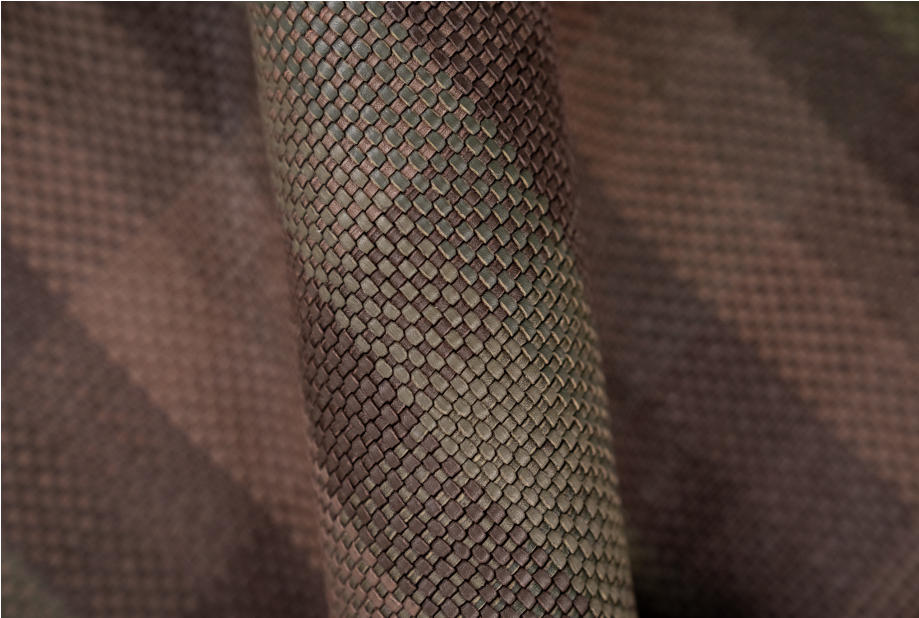


## ARGYLL ASPEN



This is a natural leather, with subtle color variation.  
It will develop a gentle patina, over time.

Exposure to sunlight may lead to fading.

For inquiries please email  
[lovecreating@lancewovens.com](mailto:lovecreating@lancewovens.com)



TYPE OF LEATHER: Calfskin

TECHNIQUE: Aniline drum dyed, hand woven and washed

DIRECTION: Girato (Diagonal) or HV (Horizontal and Vertical)

STRIP WIDTH: 3 mm

THICKNESS: 2 mm

REPEAT: 46 cm / 18 in, approx.

SIZE: Panels are woven to required size, without width or height limitation.

CUSTOM COLOR: Available upon request

IDEAL FOR: Upholstery, pillows, paneling, handrails

Notes: