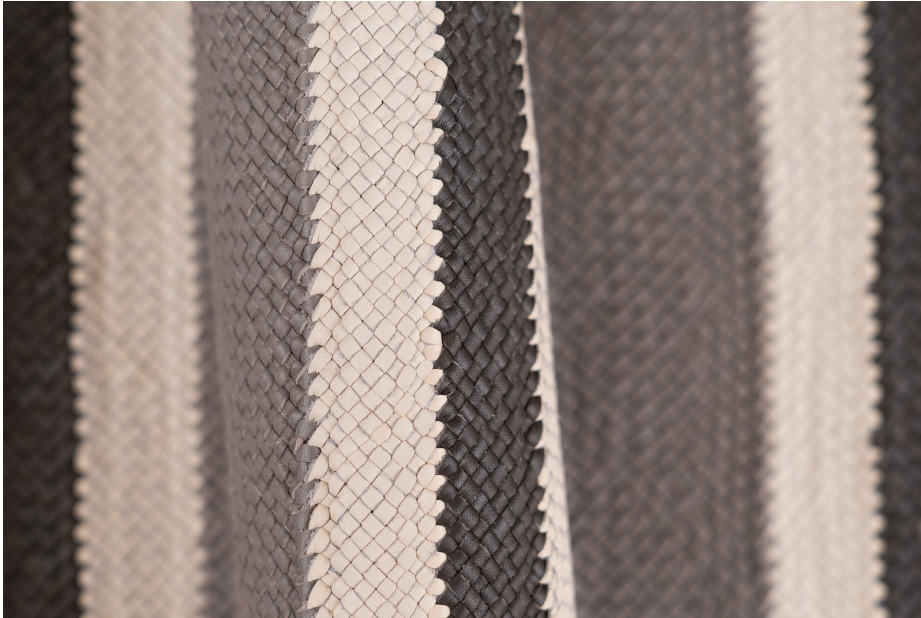


VERSILIA DOVE GREY, VANILLA & LONDON



TYPE OF LEATHER: Calfskin

TECHNIQUE: Aniline drum dyed and hand woven

DIRECTION: Stripes can run horizontally or vertically

STRIP WIDTH: 4 mm

THICKNESS: 2.0 / 2.4 mm

REPEAT: 24 cm

SIZE: Panels are woven to required size, without width or height limitation.

CUSTOM COLOR: Available upon request

IDEAL FOR: Upholstery, pillows, paneling, handrails

This is a natural leather. It will develop a gentle patina over time.

Exposure to sunlight may lead to fading.

For inquiries please email
lovecreating@lancewovens.com



Notes: