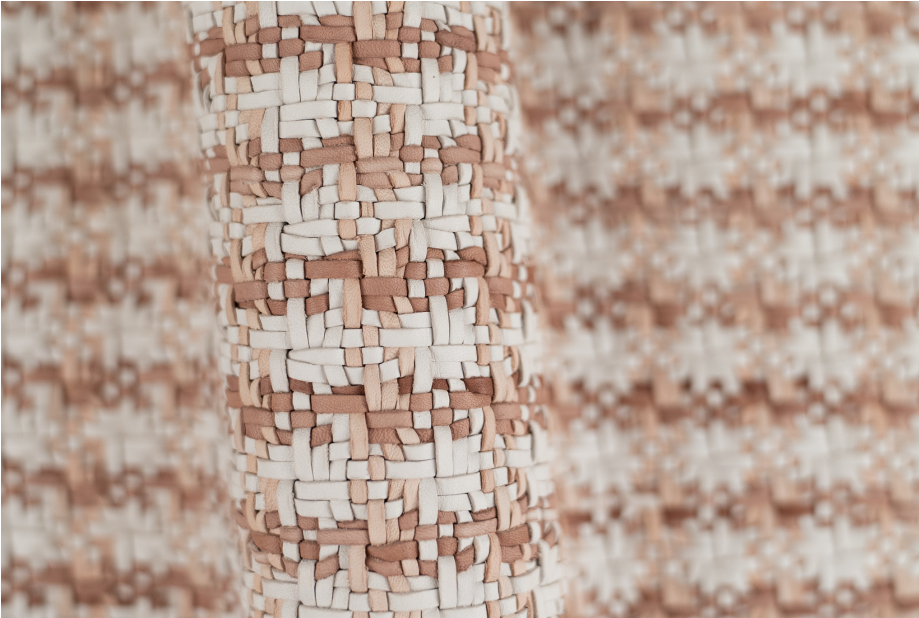


SHERLOCK IN BOHEMIA NUDE



TYPE OF LEATHER: Chrome tanned calfskin

TECHNIQUE: Aniline drum dyed, hand woven and washed

DIRECTION: Horizontal and Vertical (HV)

STRIP WIDTH: 3 mm

THICKNESS: 2 / 2.5 mm

REPEAT: 25 mm (1 in)

SIZE: Panels are woven to required size, without width or height limitation.

IDEAL FOR: Upholstery, pillows, walls, headboards, and drawer fronts

Exposure to sunlight may lead to fading.

For inquiries please email
lovecreating@lancewovens.com



Notes: