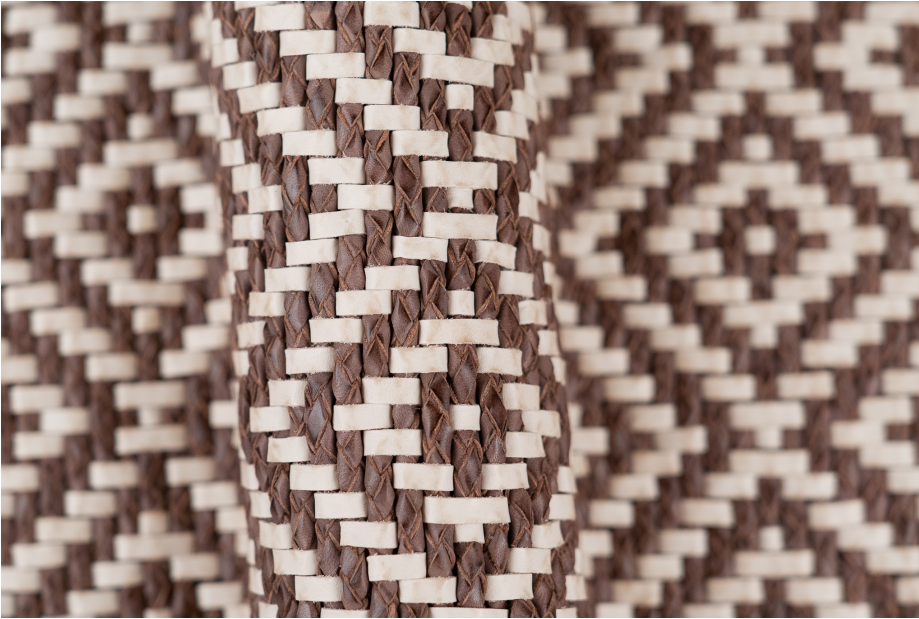


## ROMBO IVORY AND SABLE



This is a natural leather. It will develop a gentle patina, over time.  
Available with matching leather border in choice of width and color from field.

For inquiries please email  
[lovecreating@lancewovens.com](mailto:lovecreating@lancewovens.com)



[www.lancewovenleather.com](http://www.lancewovenleather.com)

TYPE OF LEATHER: Veg tanned calfskin

TECHNIQUE: Aniline drum dyed and hand woven

DIRECTION: Horizontal and Vertical (HV)

STRIP WIDTH: 5 mm + 5 mm tubular braid

THICKNESS: 5.5 mm, before 1/3 in rug pad

REPEAT: 8.5 x 21 cm

SIZE: Panels are woven to required size, without width or height limitation.

IDEAL FOR: Rugs

Notes: