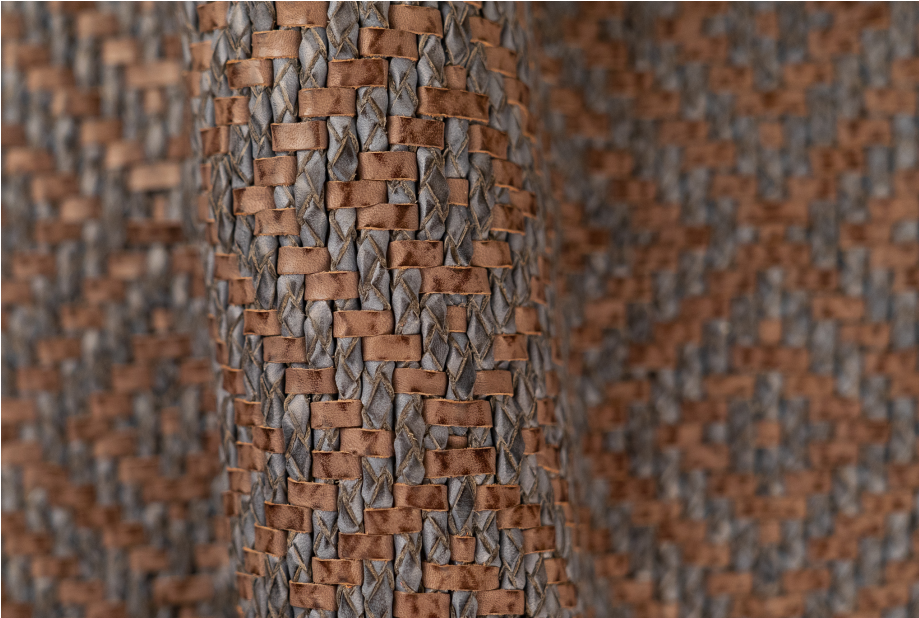


ROMBO AGRA BLUE AND ESPRESSO



TYPE OF LEATHER: Veg tanned calfskin

TECHNIQUE: Aniline drum dyed and hand woven

DIRECTION: Horizontal and Vertical (HV)

STRIP WIDTH: 5 mm + 5 mm tubular braid

THICKNESS: 5.5 mm, before 1/3 in rug pad

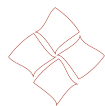
REPEAT: 8.5 x 21 cm

SIZE: Panels are woven to required size, without width or height limitation.

IDEAL FOR: Rugs

This is a natural leather. It will develop a gentle patina, over time.
Available with matching leather border in choice of width and color from field.

For inquiries please email
lovecreating@lancewovens.com



www.lancewovenleather.com

Notes:

66 Fort Point Street Norwalk, CT 06855 (203) 852-6829