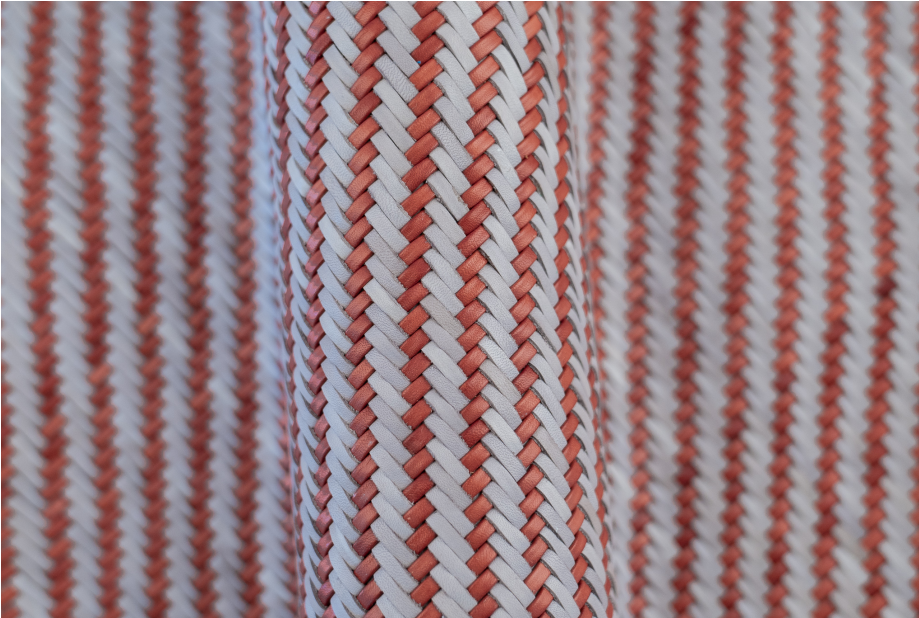


BOND DOVE GREY AND BURNT BRICK



TYPE OF LEATHER: Calfskin

TECHNIQUE: Aniline drum dyed and hand woven in double thick leather

STRIP WIDTH: 3 mm

THICKNESS: 2.2 / 2.4 mm

REPEAT: 10 mm

SIZE: Panels are woven to required size, without width or height limitation.

CUSTOM COLOR: Available upon request

IDEAL FOR: Upholstery, drawer fronts, pillows, vertical surfaces

Notes:

For inquiries please email
lovecreating@lancewovens.com

